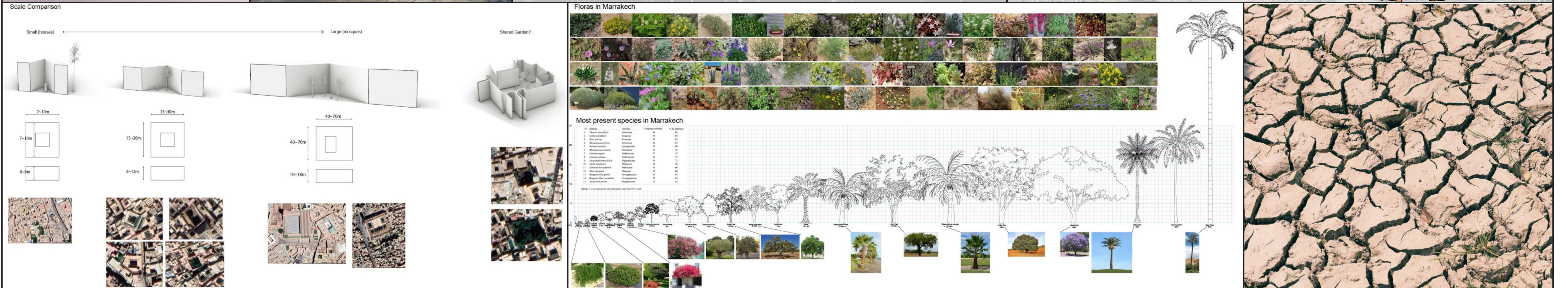
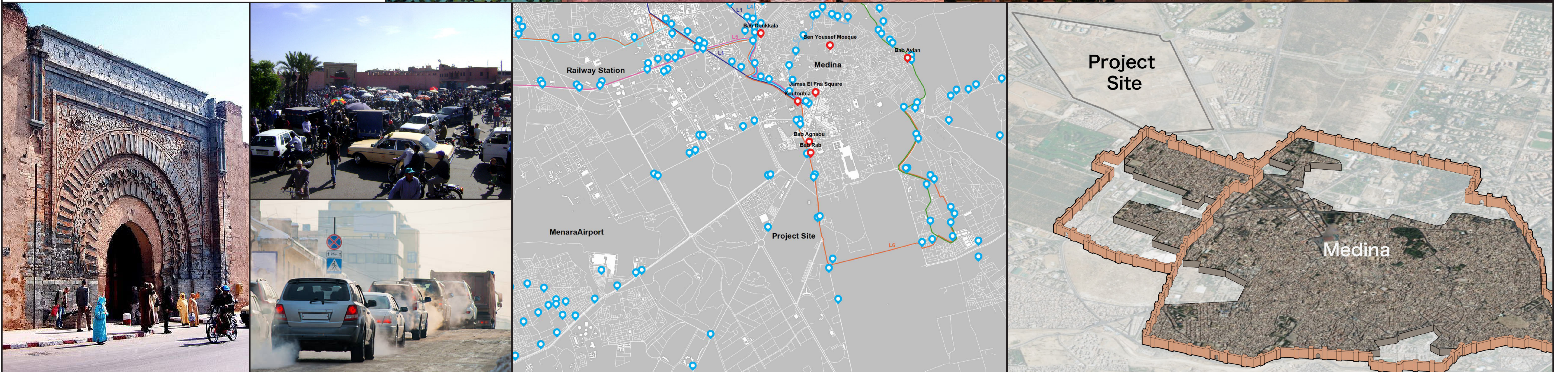
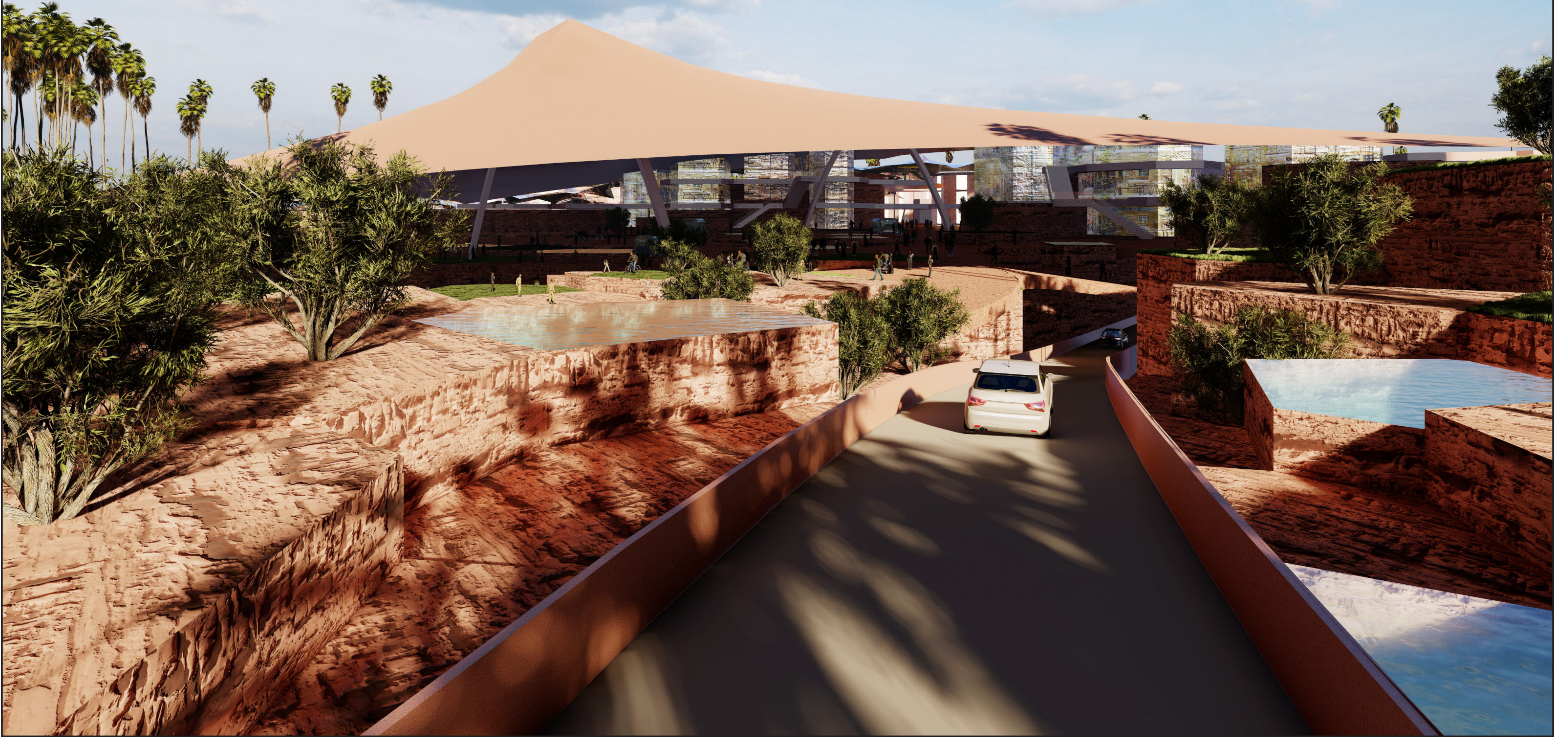


# Next Medina

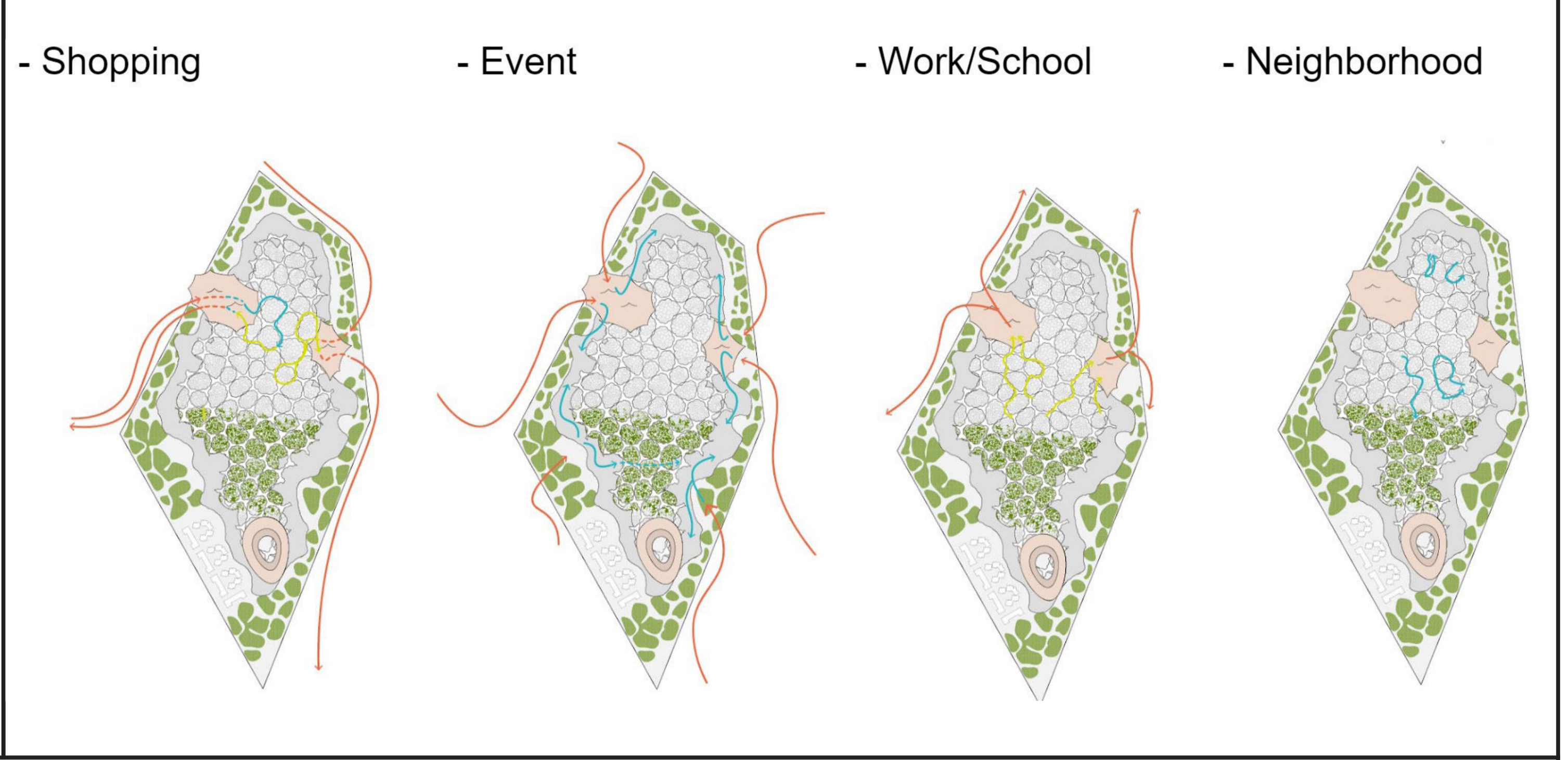
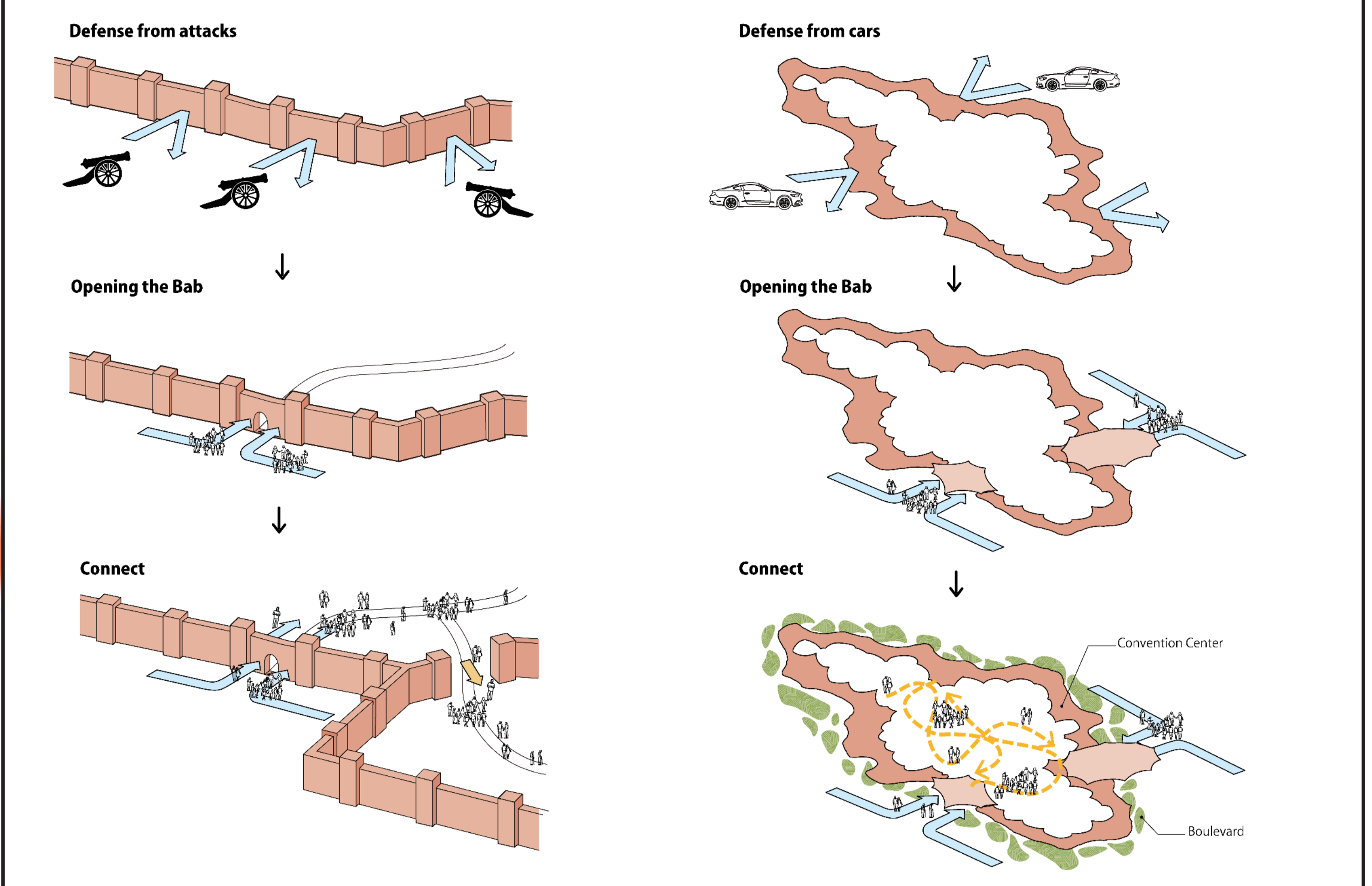
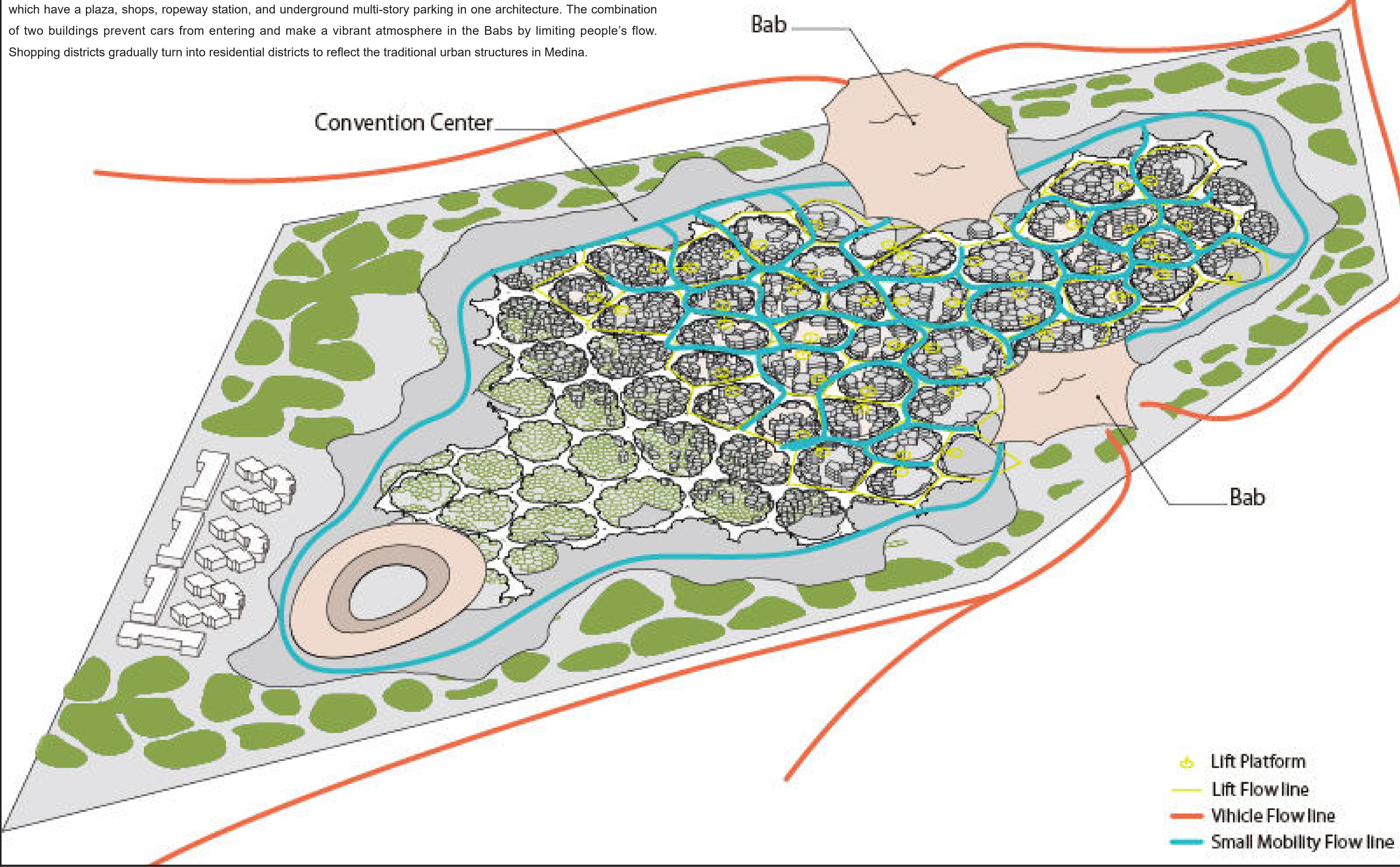
Medina, a great Islamic heritage in Marrakech, is an irreplaceable place that carries traditional Islamic culture for generations. Its walkable, human-scale city structure and labyrinth path generation make Medina one of the most attractive Islamic places to live and travel. However, the city designed centuries ago is now a reason for severe urban problems such as severe congestion, air pollution, and complete separation in Marrakech between modern and historical areas. What is it contemporarily reinterpreted Medina going to look like? How should we inherit Islamic life, culture, and city while we do not sacrifice any progress in society? Next Medina is a reinterpreted new Medina that connects Medina and other parts of Marrakech and welcomes anyone regardless of their nationalities, gender, and background. The Convention center is designed to be a new wall in this site which works as a barrier from fast mobilities to make the inside a human-centered space. Babs, the only entrances to the inside, are hubs where people change their mobilities and enjoy shopping, events, and gathering. A master plan is designed based on a voronoi geometry which imitates a labyrinth-style structure in Medina and provides a space that mixes shopping and residential districts in a gradational way. Small mobilities and ropeway are the main mobilities that create a whole new human-scale city experience while ensuring convenient life in the extremely hot climate in Marrakech.



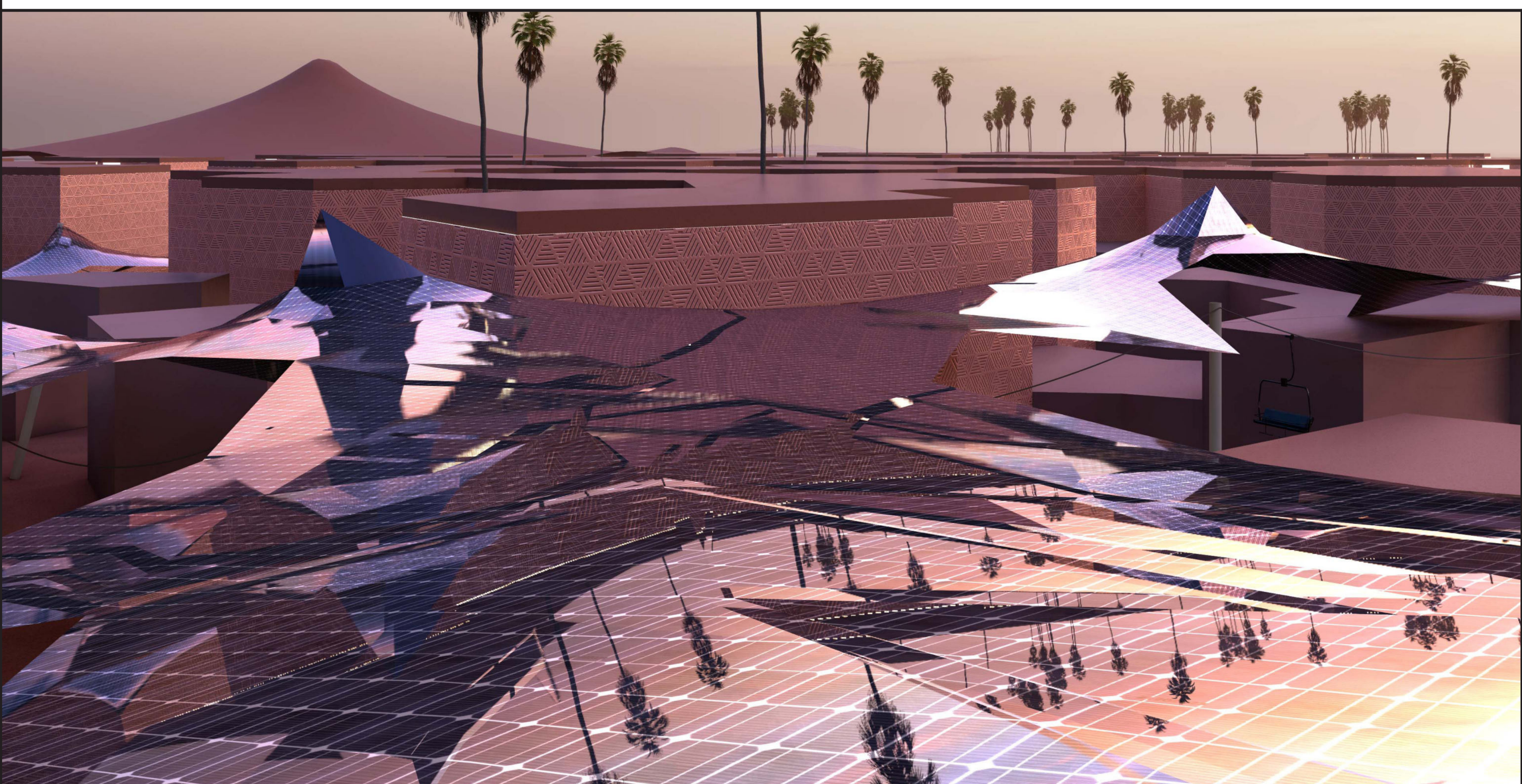
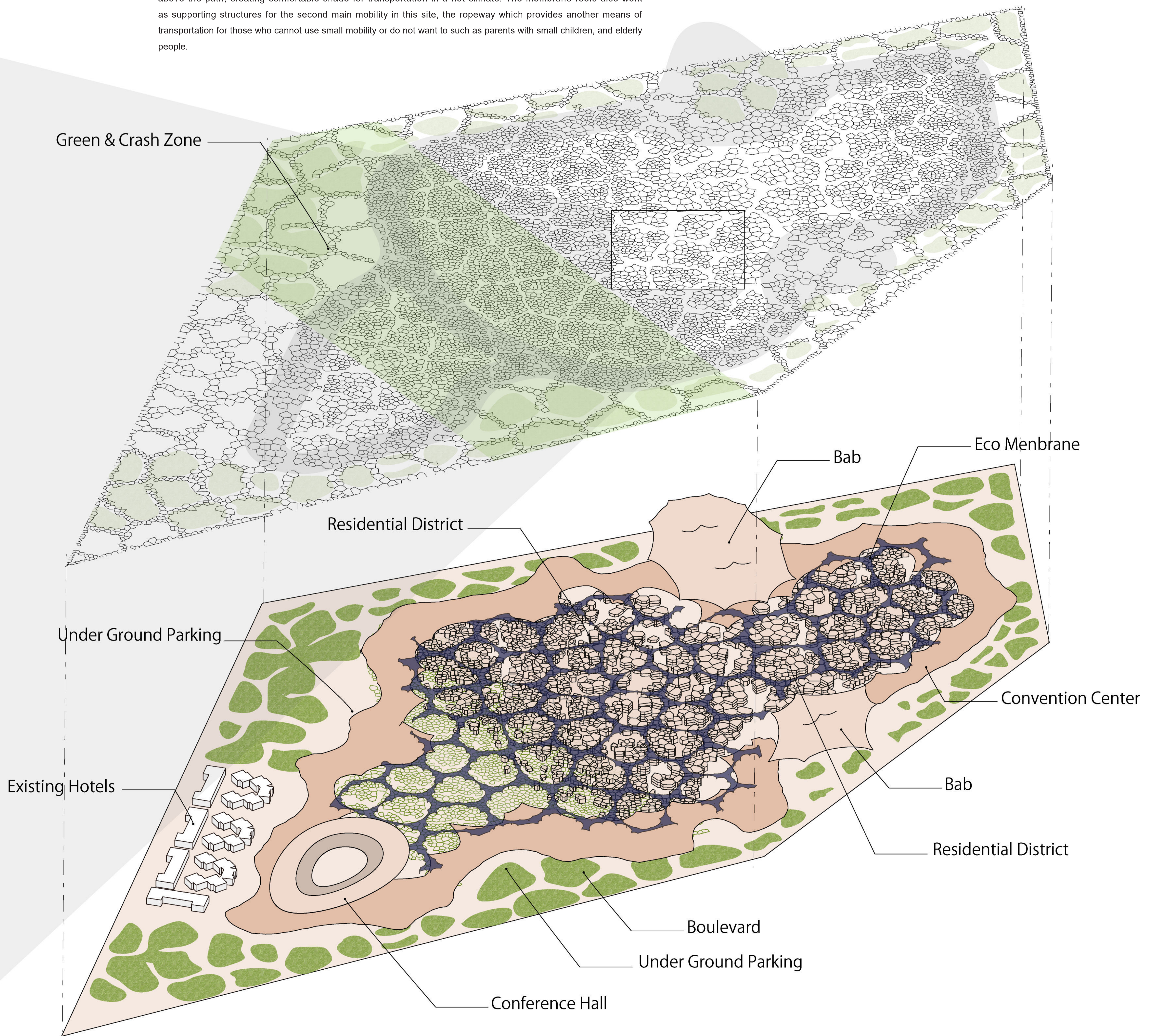
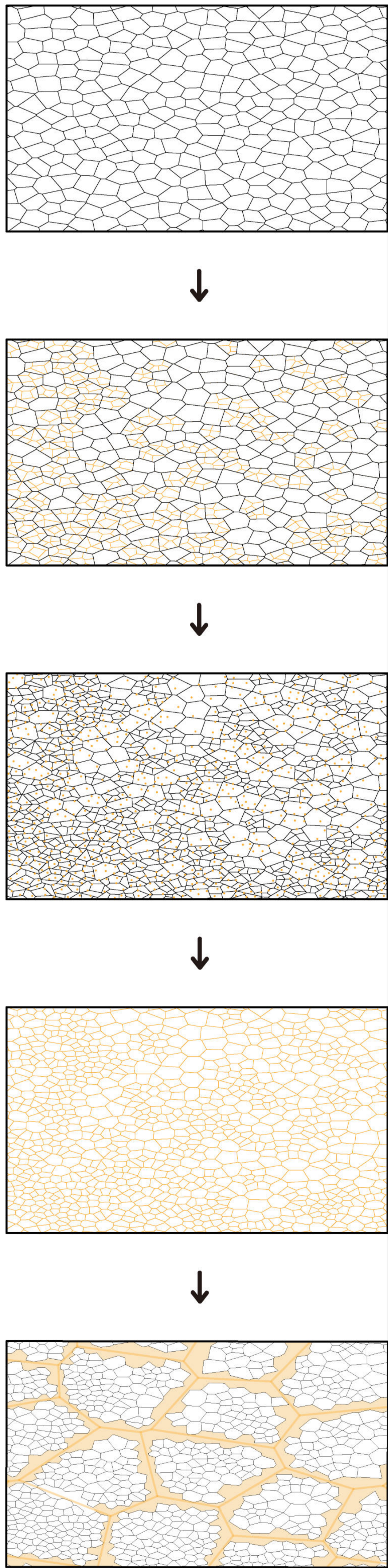


# Site Plan

Unlike the traditional Medina, the wall is now a circular convention center and the Bab is a new type of integrated gate which have a plaza, shops, ropeway station, and underground multi-story parking in one architecture. The combination of two buildings prevent cars from entering and make a vibrant atmosphere in the Babs by limiting people's flow. Shopping districts gradually turn into residential districts to reflect the traditional urban structures in Medina.

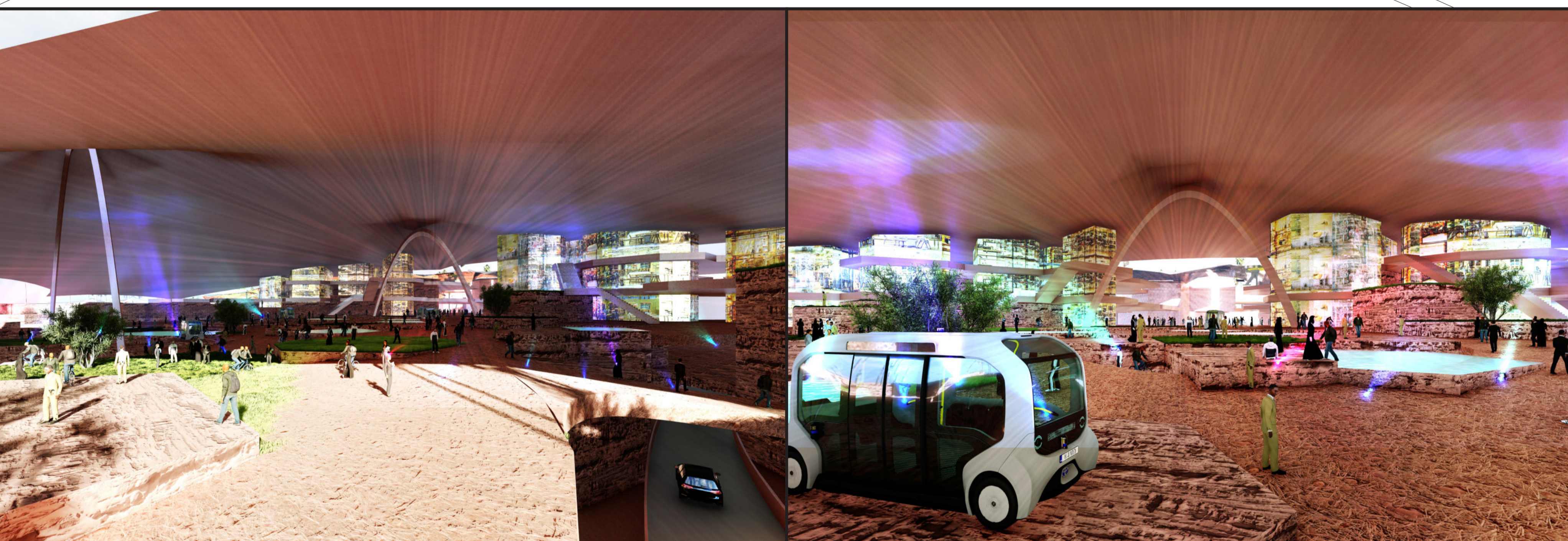
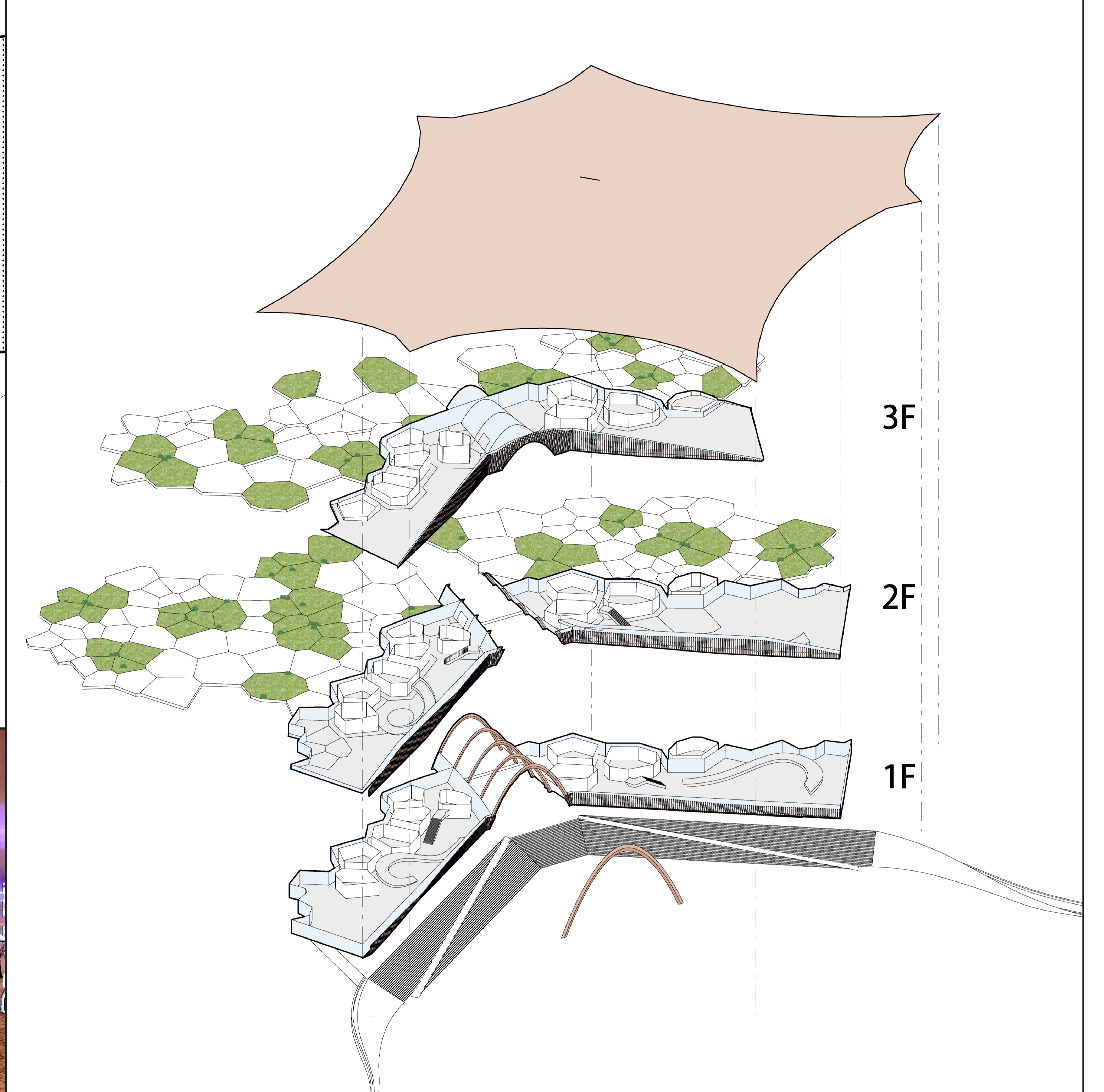
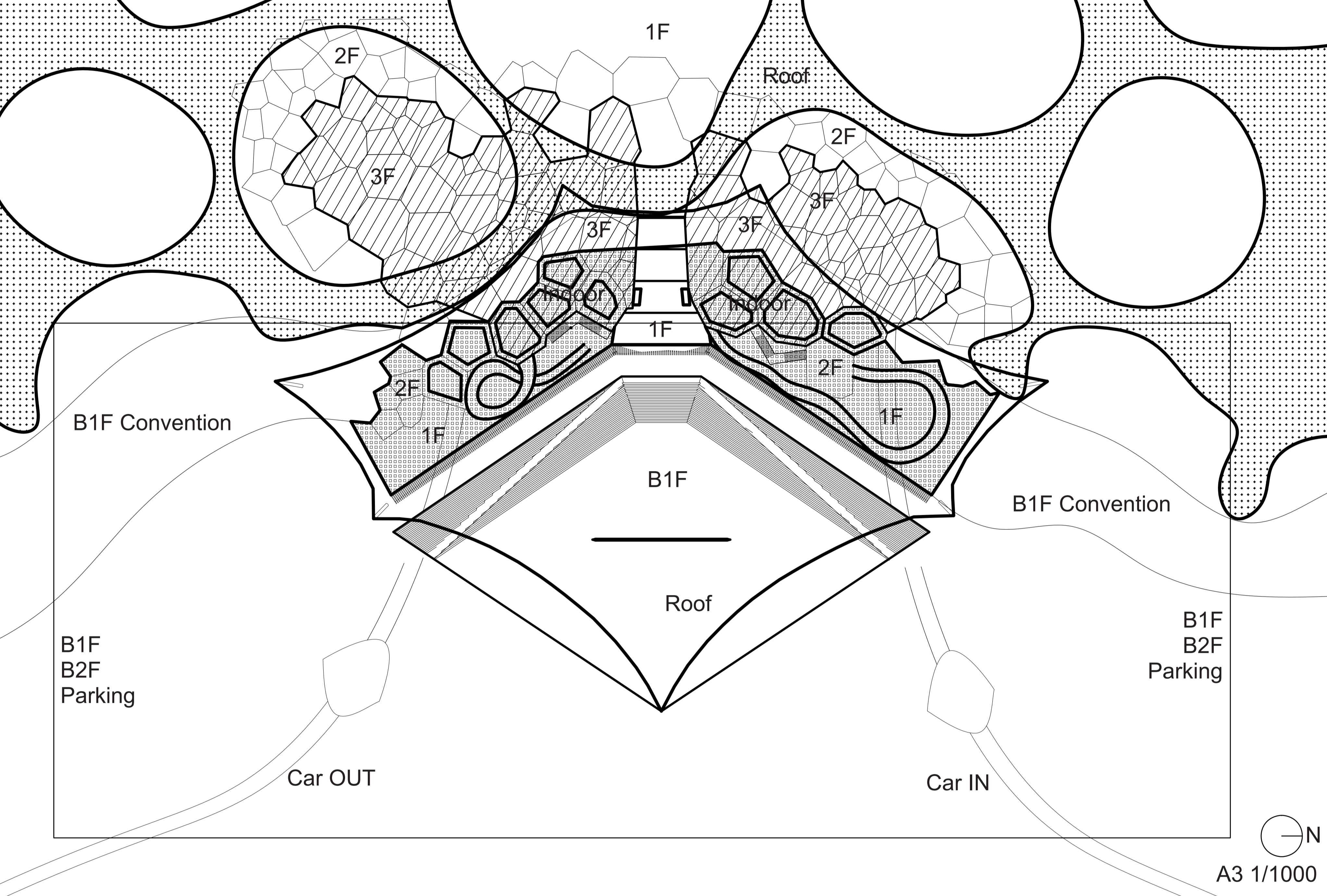
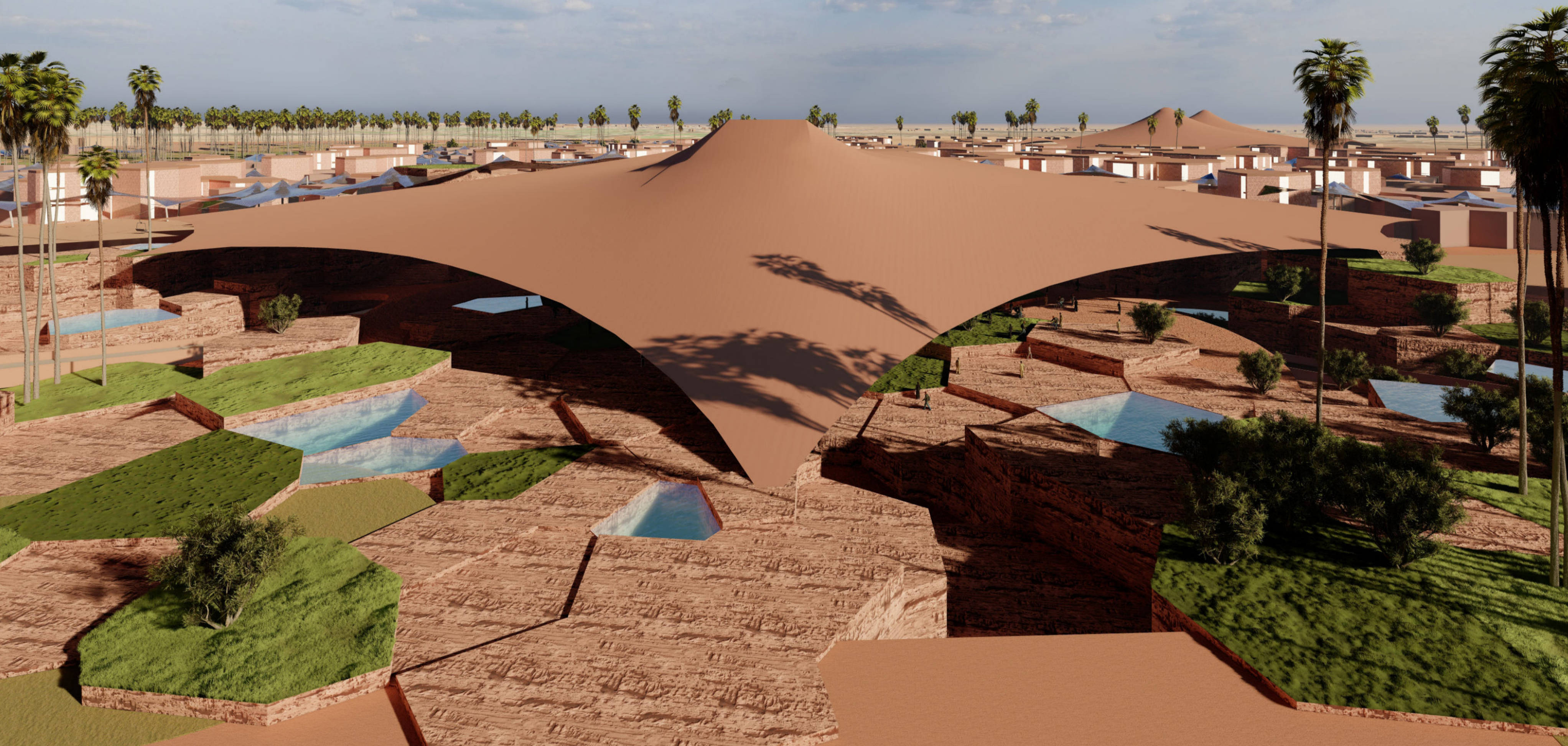


As all paths are designed for pedestrians and small mobility users, membrane roofs with PV panels are constructed above the path, creating comfortable shade for transportation in a hot climate. The membrane roofs also work as supporting structures for the second main mobility in this site, the ropeway which provides another means of transportation for those who cannot use small mobility or do not want to such as parents with small children, and elderly people.

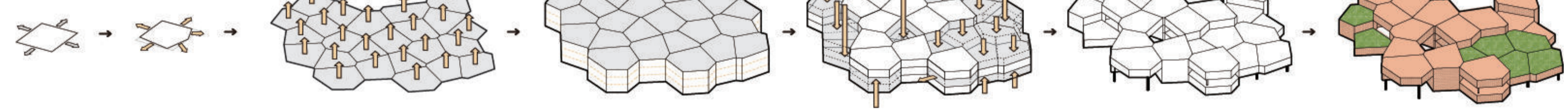


# Bab

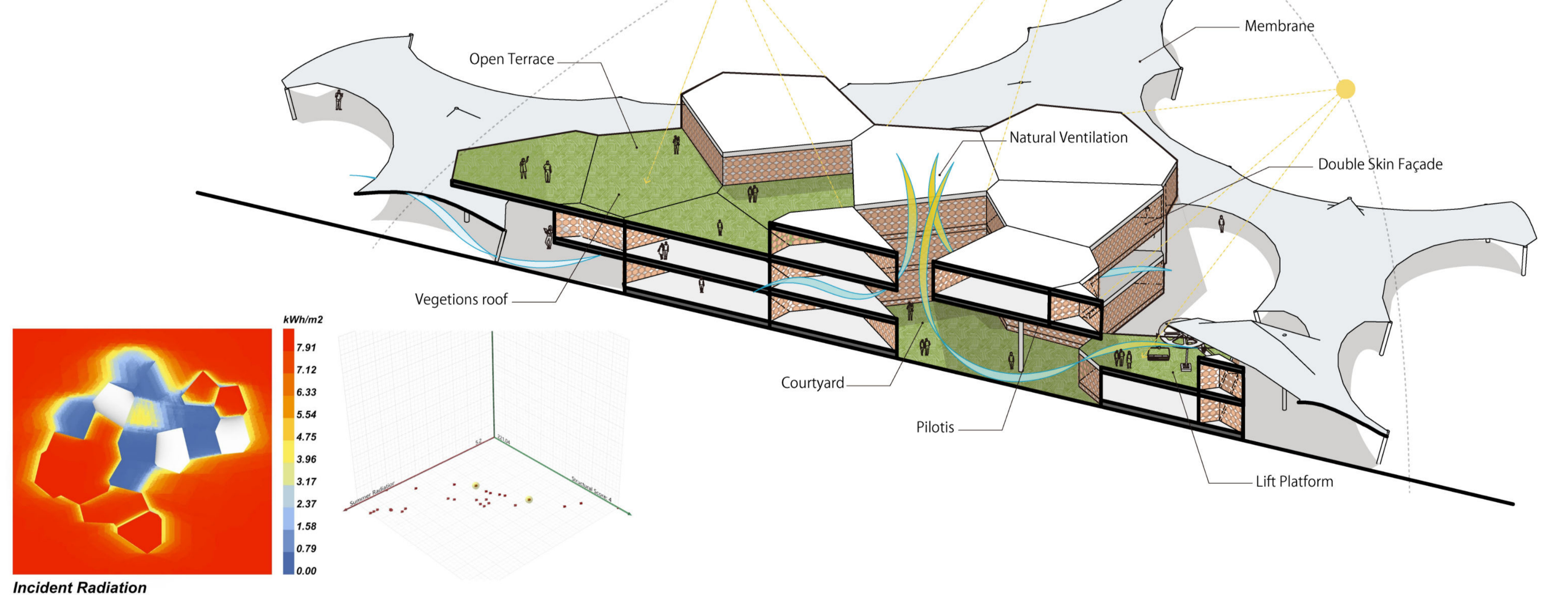
Unlike the traditional Medina, the wall is now a circular convention center and the Bab is a new type of integrated gate which have a plaza, shops, ropeway station, and underground multi-story parking in one architecture. The combination of two buildings prevent cars from entering and make a vibrant atmosphere in the Babs by limiting people's flow. Shopping districts gradually turn into residential districts to reflect the traditional urban structures in Medina.



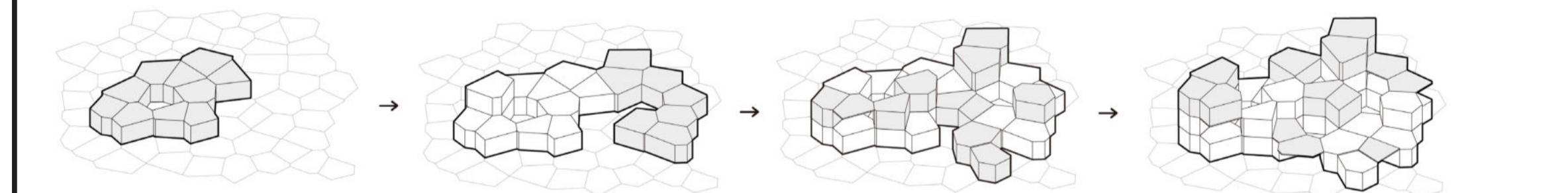
## Shopping



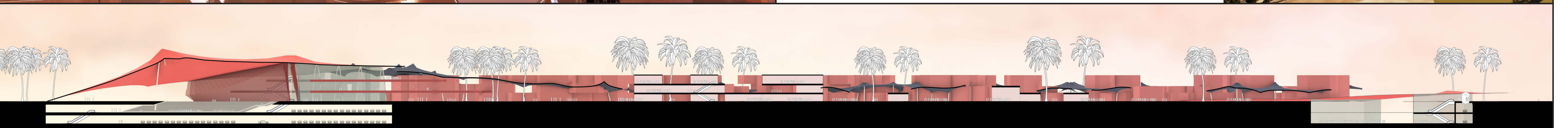
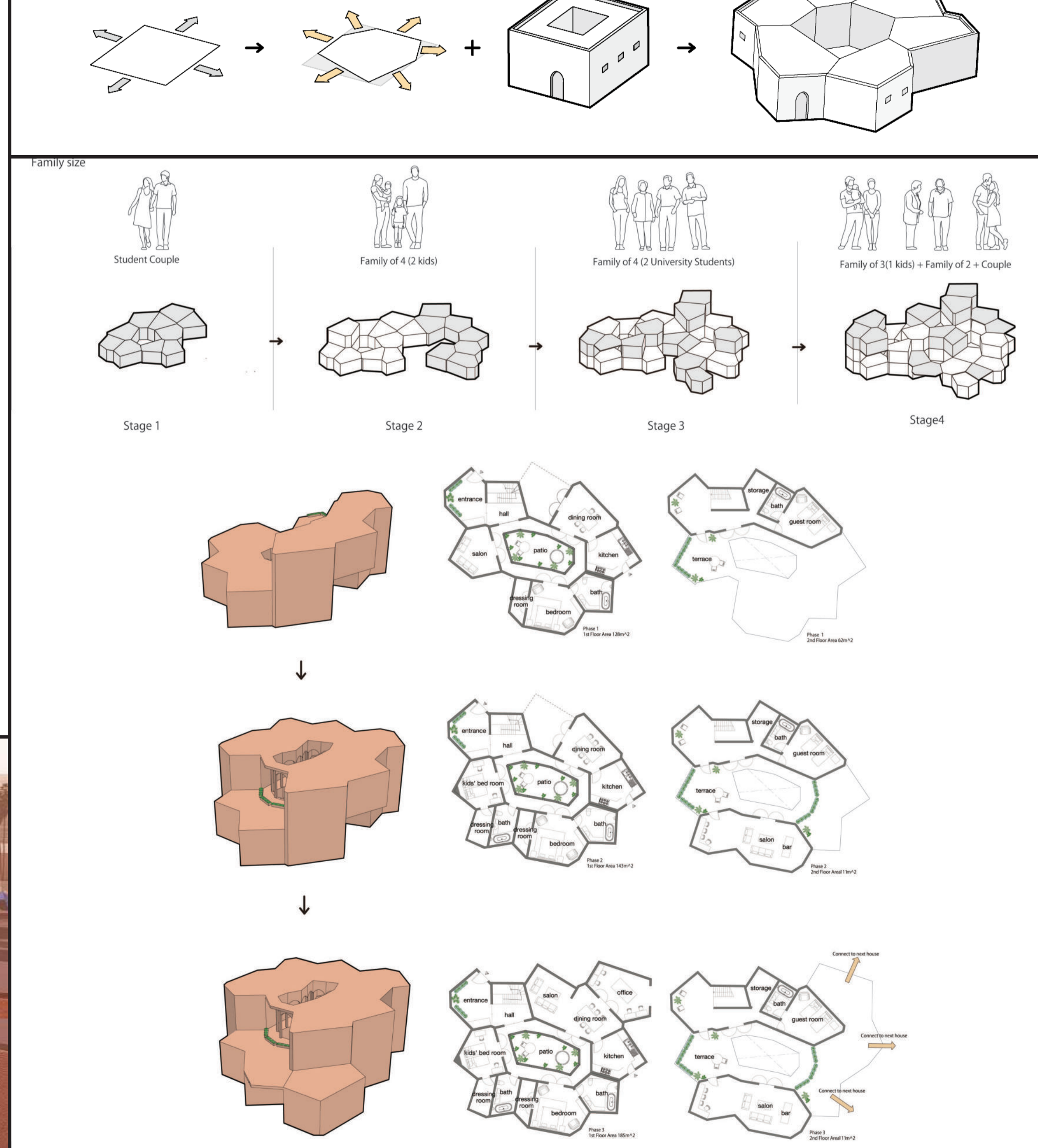
Shopping districts including paths and buildings are also designed based on the voronoi geometry to create consistent space with other areas on this site. The design achieved through simulations allows an optimized amount of sunlight in summer and winter and creates semi-outdoor space on ground level and roof, which can be gathering places day and night. Creating comfortable, and also sustainable and ecological space is aimed in the design as the traditional Medina realized that by the combination of narrow paths and dense buildings.



## Residence



Like residents autonomously improving their living environment in Medina, the residential districts are designed to inherit this tradition. The 1st story housings are constructed with sufficient space around them for later generations to redevelop horizontally and vertically. Semi-private rooftop areas created in the middle of redevelopment can be used as a space only for residents or ropeway stations.



# Next Medina

Medina, a great historic heritage in Makkah, is an irreplaceable place that carries traditional Islamic culture for generations. Its walkable, human-scale city structure and labyrinth path generation make Medina one of the most attractive Islamic places to live and travel. However, the city designed center-age is now a vision for severe urban problems such as severe congestion, air pollution, and complete separation in transition between modern and historical areas. What is contemporary urban planning doing to build back? How should an urban landscape, culture, and city evolve to fit modern life program in history?

Next Medina is a reimagined new Medina that connects Medina and other parts of Makkah and welcomes anyone regardless of their nationality, gender, and background. The Convention center is designed to be a new wall in the city which acts as a barrier from the old Medina to make the history to become a new space.

Both the only entrance to the walls, are the walls where people change their mobility and enjoy shopping, events, and gathering.

A major plan is designed based on several journey which include a major mobility structure in Medina and provides a space that shows shopping and residential districts in a pedestrian way.

Small mobility and roadway on the main mobility that create a whole new human-scale city experience while ensuring convenient life in the extremely hot climate in Makkah.

